

# ONLINE BIOMETRICS KIT

With state-of-the-art Technology H/w and S/w for R & D

## BIOMETRICS

A Biometric System is essentially a pattern recognition system that establishes a person's identity by comparing the binary code of a uniquely specific Biological or physical characteristic to the binary code of the stored characteristic.

Online Biometrics kit is to facilitate Institutes and Research Centres to setup a Biometrics lab to learn, teach and develop Biometric applications based on Fingerprint, Signature, IRIS and Face Recognition.

## FINGER PRINT

### Fingerprint Software

- Extractor that creates fingerprint templates from fingerprint images
- Matcher that performs fingerprint template matching in 1-to-1 (verification) and 1-to-many (identification) modes.
- Available in SDK that supports C++, C# programming in Windows with Sample programs.



### USB Fingerprint Reader



<b>Supported OS</b>	Microsoft Windows (32-bit & 64-bit)
<b>Sensor resolution</b>	512 ppi
<b>Image capture area</b>	15 x 18 mm (0.6" x 0.7")
<b>Sensor type</b>	Optical
<b>Device size</b>	65 x 36 x 16 mm (2.6" x 1.4" x 0.6") (approx)
<b>Operating temperature</b>	0°C ~ +40°C
<b>Operating humidity</b>	20-80 % (non-condensing)

## FACE RECOGNITION

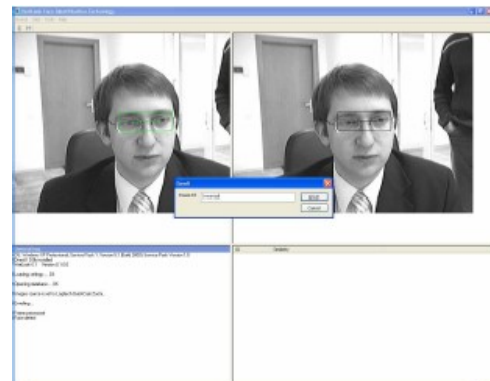
### Face Recognition Software

- Extractor creates face templates from face images. The Extractor can generalize a face template from several images that include the same face to improve the template's quality.
- Matcher performs facial template matching in 1-to-1 (verification) and 1-to-many (identification) modes.
- Available as SDK that supports C++, C# programming in Windows with sample programs.

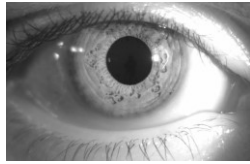
### Camera:



- VGA Resolution
- 30fps
- Color
- USB or GigE.
- Lens and accessories



## IRIS RECOGNITION



### Hardware:

- ◆ Low Light Sensitive Monochrome Camera with Accessories (Lens, Light, Stand )
- ◆ Image Capture Hardware

### Software:

◆ Image Capture & Processing Libraries include highly optimized functions for morphology, filters, geometric, measurement, transforms, segmentation, point-to-point and powerful geometric search tool using edge or area-based techniques with sub-pixel accuracy.

**NOTE: User can use the above hardware and Software for Iris Capture, Pre processing work & can develop their own Iris Recognition package in VC++ or C# with the SDK provided.**

## SIGNATURE

- ◆ Active Electromagnetic Sensor Type
- ◆ Active Energized Pen Type
- ◆ 7.25" X 6.1" X 1.56"  
184 mm X 155 mm X 40 mm  
Dimensions
- ◆ 4.4" X 2.5" 112 X 64 mm Signing Area
- ◆ 377 points per second Conversion rate
- ◆ Bundled software including Create applications in C. Native assembly for the .NET environment. Compatible with Windows.
- ◆ MS word, Excel & Adobe Acrobat plug-Ins

## LCD Touch Pad for capturing Electronic signature, Interactive text and Graphics



## CONTACT

### INDIA :

**Online Solutions (Imaging) Pvt. Ltd.**  
**15A PNMK Salai Baby Nagar**  
**Velachery**  
**Chennai 600 042 INDIA**  
**Phone: 91 44 65183476/43132630**  
**Email: info@onsol.com**

### ASIA :

**Online Solutions**  
**#04-04, Golden Wall Centre**  
**89 Short Street**  
**Singapore 188216**  
**Phone: 65 – 63343790**  
**Email: onsol@singnet.com.sg**

**ONLINE** The®  
**SOLUTIONS** Solution Sellers  
Since 1995

[www.onsol.com](http://www.onsol.com)

**ai** advancing VISION-IMAGING  
**MEMBER**

  
**ELECTRONIC SECURITY**  
ASSOCIATION OF INDIA  
ID - MA0308TN

All trademarks and registered trademarks are property of their respective owners.  
Specifications are subjected to change without any prior notice  
\* Pictures shown here are for representative visuals only